

Wyoming Capitol Visit

March 29, 2017

Assemblyman Ken Cooley



“Wyoming Capitol Square Project”

Wyoming Capitol Square Project Overview

The Wyoming Capitol Square Project is comprised of the restoration of the Historic Capitol and an extensive restoration of the adjacent annex, the “Herschler Building”. The top priorities in restoring the Herschler Building are to create a modern functional seat of government utilizing the core of the existing structure with significant expansions to that space to accommodate current and future needs.

The existing annex is being expanded out and below ground. Key components of the solution to create space within the existing annex include 1) an extended foundation of the existing annex building that will add space to every floor 2) tunnels with additional committee spaces connecting the annex to the historic capitol below ground and 3) underground parking beneath existing office space will be converted to additional working space.

Wyoming Capitol Square Project Overview, Cont.

56,000 additional square feet is being added by the annex tunnel expansion alone and will include 6 large meeting rooms (75-100 occupancy each), and a new visitor center.

By 2015, the project and budget had ballooned out after years of planning and the project was nearly dead. They decided to professionalize the team by bringing on project management in early 2015, after years of struggling. The project is now back on budget and will be completed in early 2019.

The existing annex - the Herschler Building - was “skinned” or gutted. An extended foundation (arrow) of the existing building will eventually add space to each floor. To the right is the foundation for the Central Utility Plant.



Parking space previously beneath the annex Herschler Building office spaces will be converted to additional working space.



An entire underground power/generator and underground pumps were installed to deal with the water table 7 feet below ground. These will always remain in operation. The water table issue resulted in the decision to just go one floor below ground.



An above ground middle section of the existing Herschler Building was previously an “atrium”- an unused space. It was removed (arrow) in order to open up a view of the historic Capitol from the park and street.



The two buildings are separate from the historic building above ground, but connected by underground office space and tunnels. 56,000 additional square feet is being added by the annex underground expansion and will include 6 large meeting rooms (75-100 occupancy each), and a new visitor center.



A new multi-purpose auditorium is being constructed below the former under-utilized atrium location.



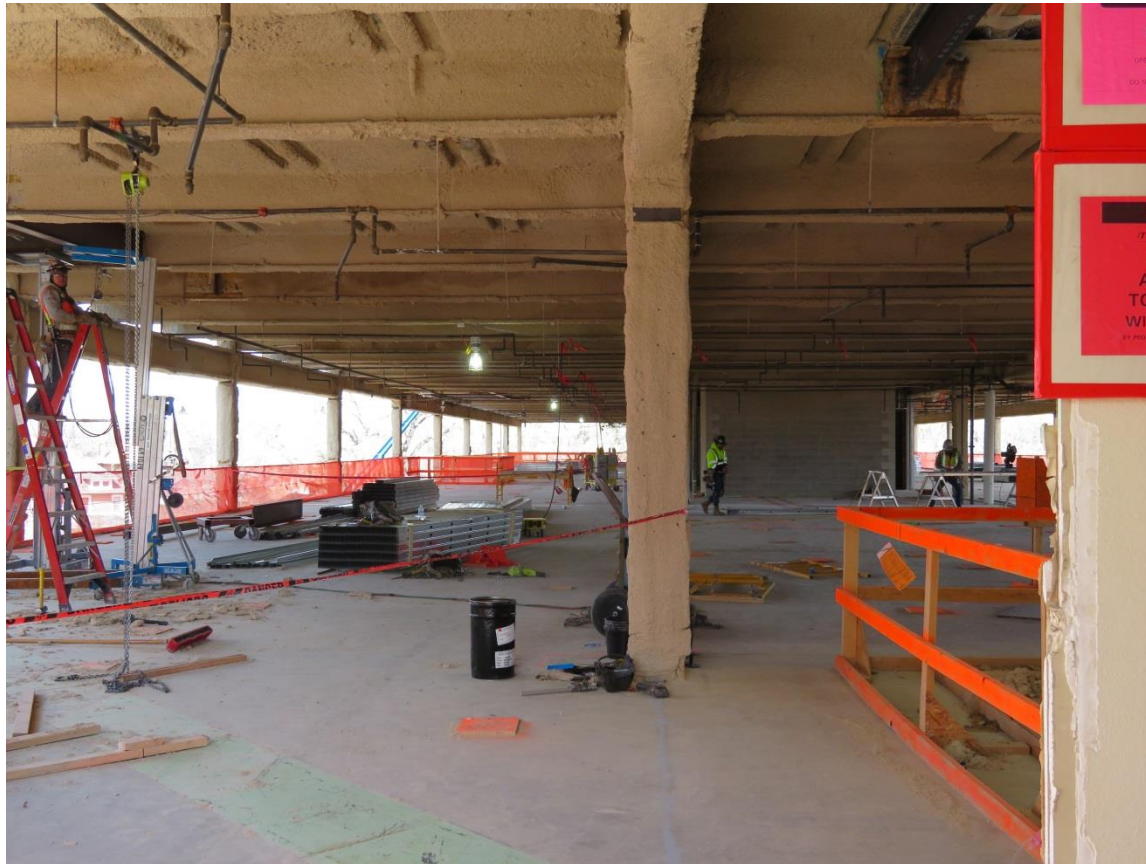
Old tunnel between the Herschler Building and Historic Capitol Building. New framing on each side is where additional Hearing Rooms will be constructed.



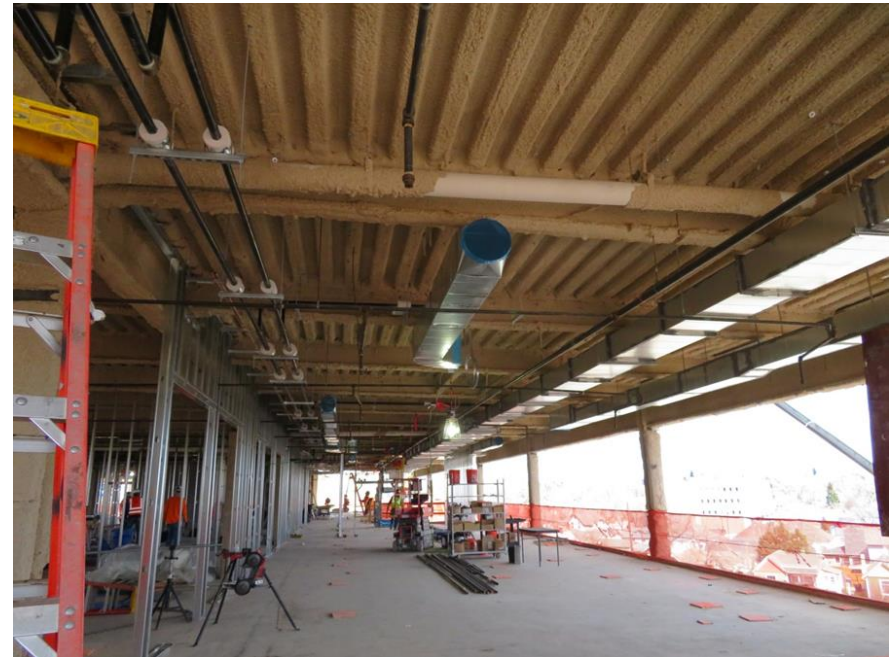
Old ventilation stacks from the Central Utility Plant (CUP). To be relocated for below-grade Hearing Rooms.



Inside the “skinned” Herschler building, the work begins. Fire proofing and support beams remain from the original structure.



Construction of office and meeting room framework has started to take shape.



New openings in floors will provide the internal path for the HVAC, electrical and plumbing.



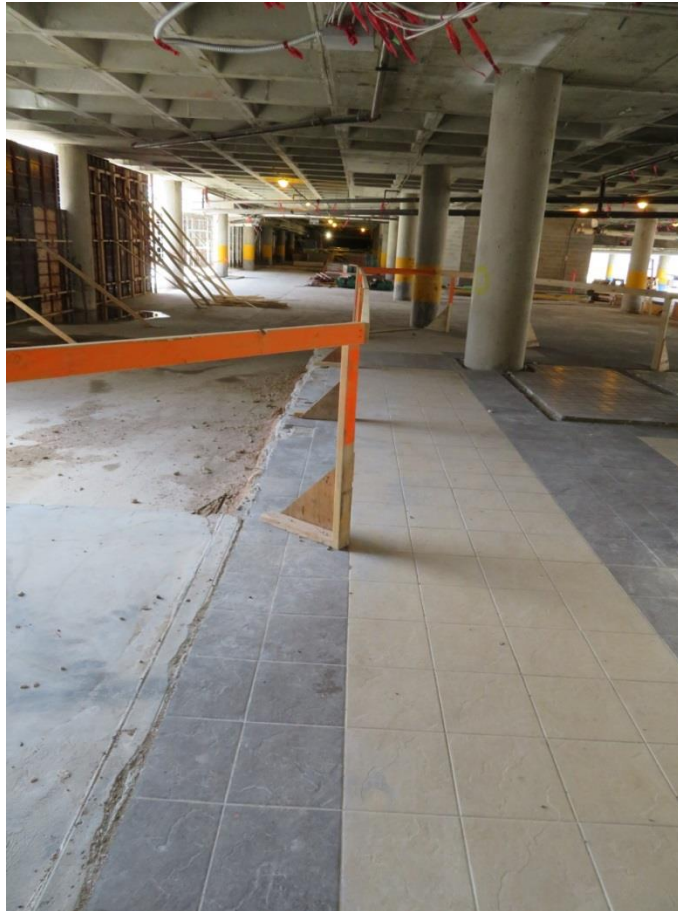
New walls are built adjacent to a few remaining existing ones.



Laying the groundwork for all new HVAC,
electrical and fire suppression systems in the Herschler Building.



Basement of the annex Herschler Building under construction.



Corridor connecting the Historic Capitol to the Herschler Building.



The historic Wyoming Capitol was gutted and is also under restoration and rehabilitation. The Capitol wing was built in phases. Gaps exist between sections that were built at different times.



Ramps were built at the back of historic Capitol entrance to correctly address ADA access.



Assemblyman Ken Cooley Wyoming Capitol Visit 2017

Secured safety entrance for hazardous material removal.



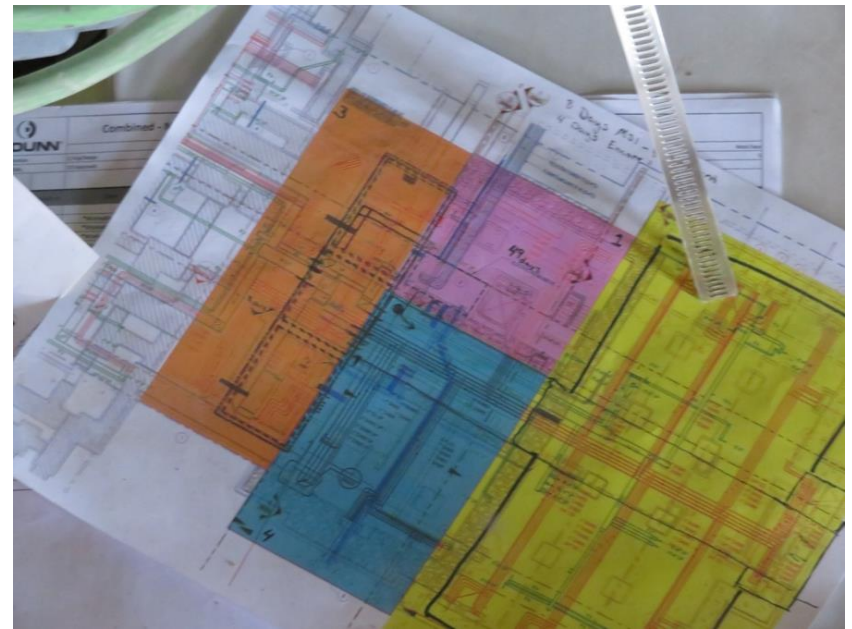
Original glass and decorative art around windows are protected by wooden boards during construction.



Construction safety standards are clearly marked throughout the interior of the historic Capitol wing.



Workers can view blueprints and project details on-site.



Added steel reinforcement for new HVAC, electrical, and plumbing pathways.



Mechanical, electrical, and HVAC systems installation in newly added path.



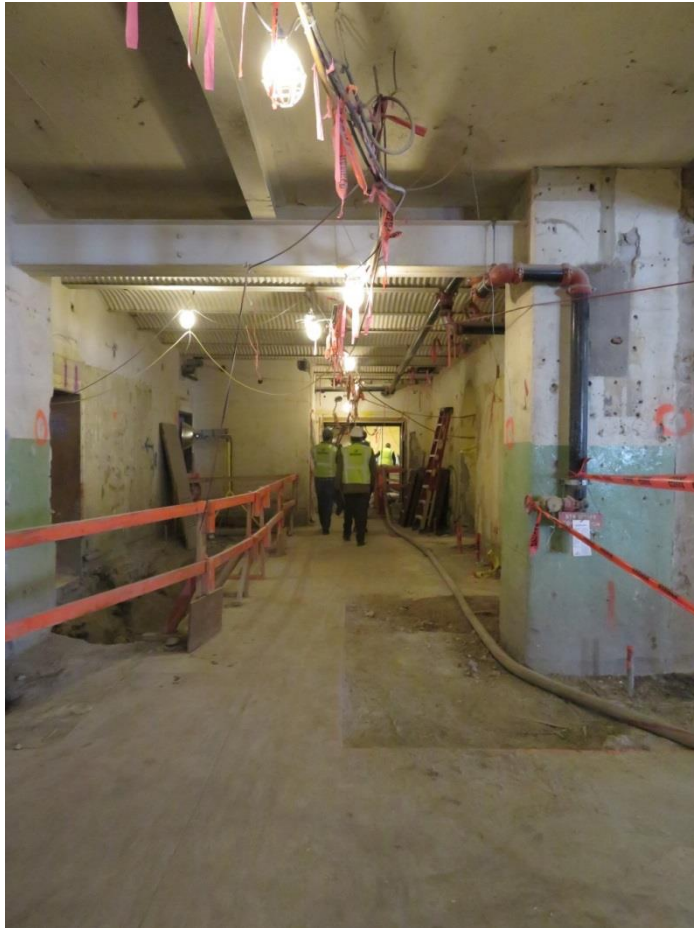
Elevator relocated to allow for ADA travel pathway.



Skylights that were removed in the 1970's are under restoration to flood the Capitol with natural light on all floors.



Basement corridor showing foundation excavation for foundation reinforcement.



Second floor historic capitol renovation. Old wooden ceiling beams are among new reinforced concrete.



Old ceiling was removed to bring back the high-ceilinged historic Supreme Court room.



Old stairwell renovation. The chipboard is covering historic railings that will be restored.



Historic elements are protected during construction, cont.

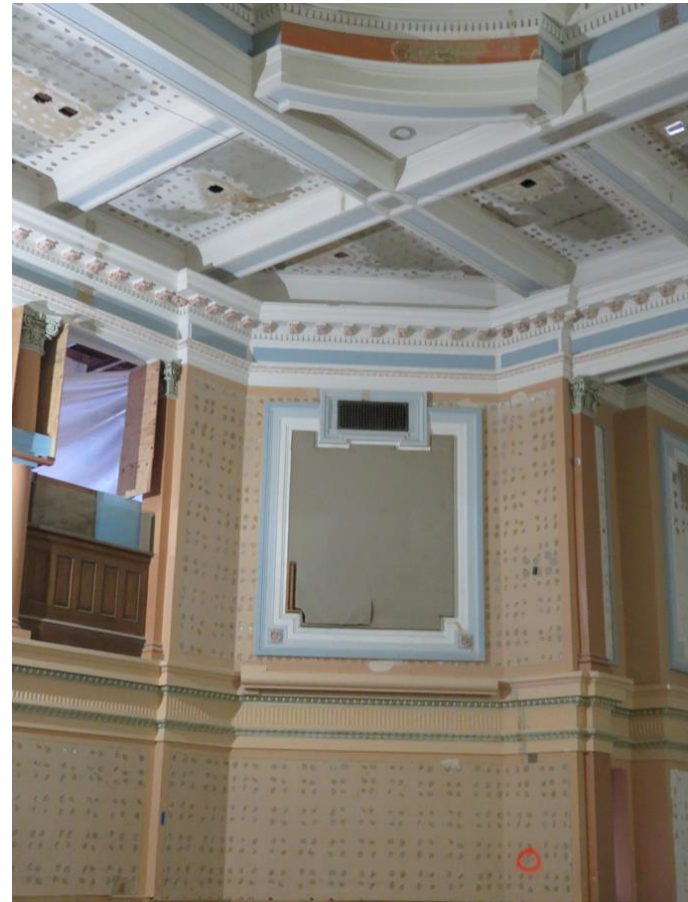


Historic and decorative elements were preserved.



Senate Chambers





Ceiling restoration in the Senate Chamber.



Looking up to Capitol dome from first floor.



The “Bundle of Sticks” fresco is prominent
in the Capitol building.



Skylight above the House of Representatives Chambers.





Decorative column details were preserved.



Building materials needed for immediate use were staged inside the historic wing.



Containment area for hazardous material removal.



Indoor staging areas in the Historic Capitol.



Construction Staging Areas

Onsite project management trailers included meeting and office spaces to help facilitate the project. Planning and space needs for the contractors were taken into account.

Large amounts of outdoor space were dedicated to staging materials and equipment.

Fencing was installed to secure the project.