

# Carson City, Nevada

October 2017

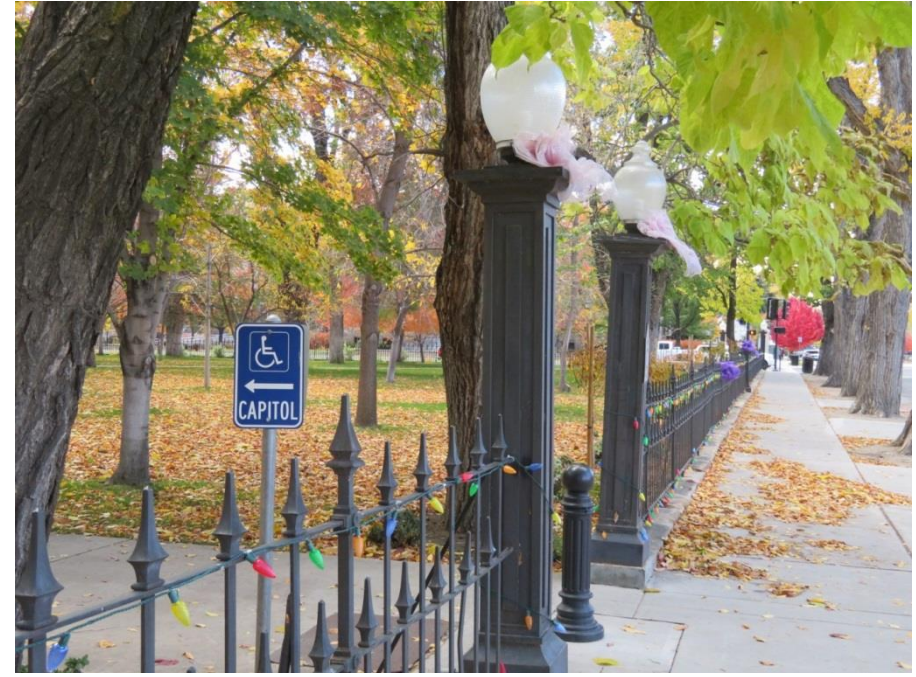
- Nevada's "People's House" is made up of the historic Capitol building that houses the governor, and a modern legislative building that houses the Senate and Assembly.
- Accessibility is emphasized in the infrastructure of the buildings. Integrated technologies support the sharing of ideas both locally and remotely.
- The building has lots of space for informal conversations and impromptu meetings on every floor to facilitate collaboration with the legislative deliberative process.



The Historic Capitol building was constructed in the Neoclassical Italianate Style.

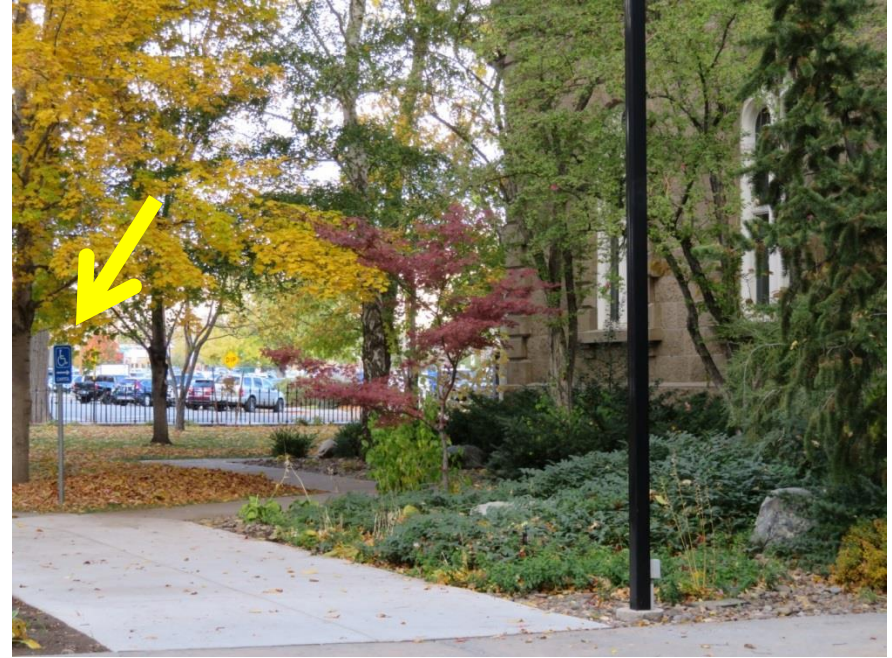






Starting from curbside parking access adjacent to the Capitol grounds, clear signage directs visitors to entrances compliant with the Americans with Disabilities Act.



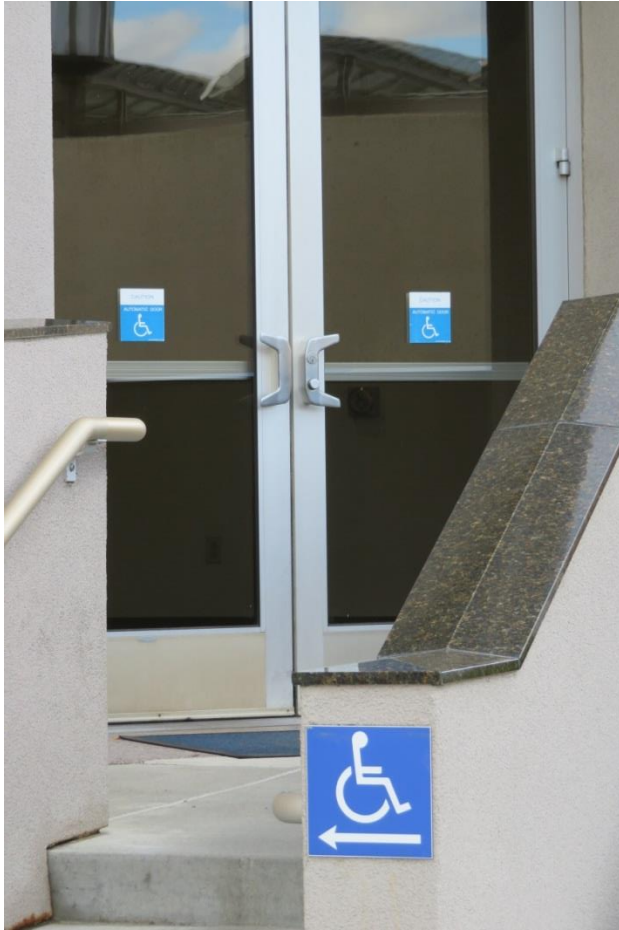


Ramps and pathways to the Capitol are designed with accessibility in mind.

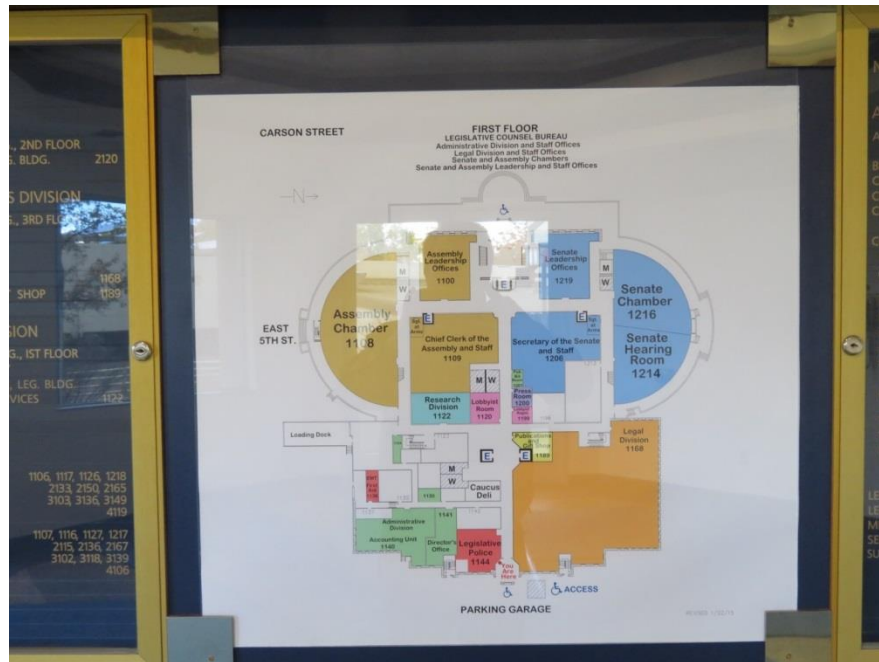


The modern Legislative building has entryways accessible to all.

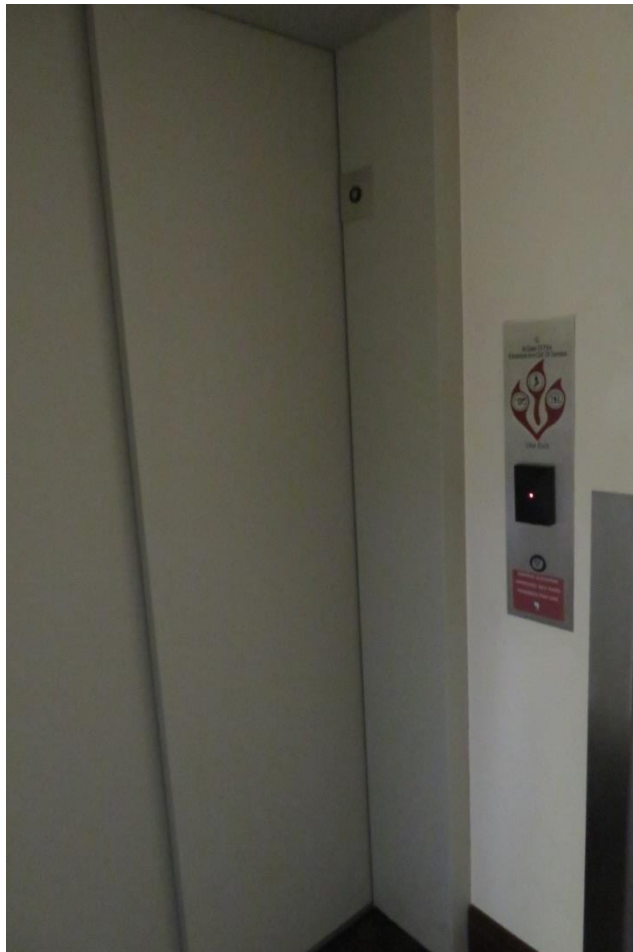


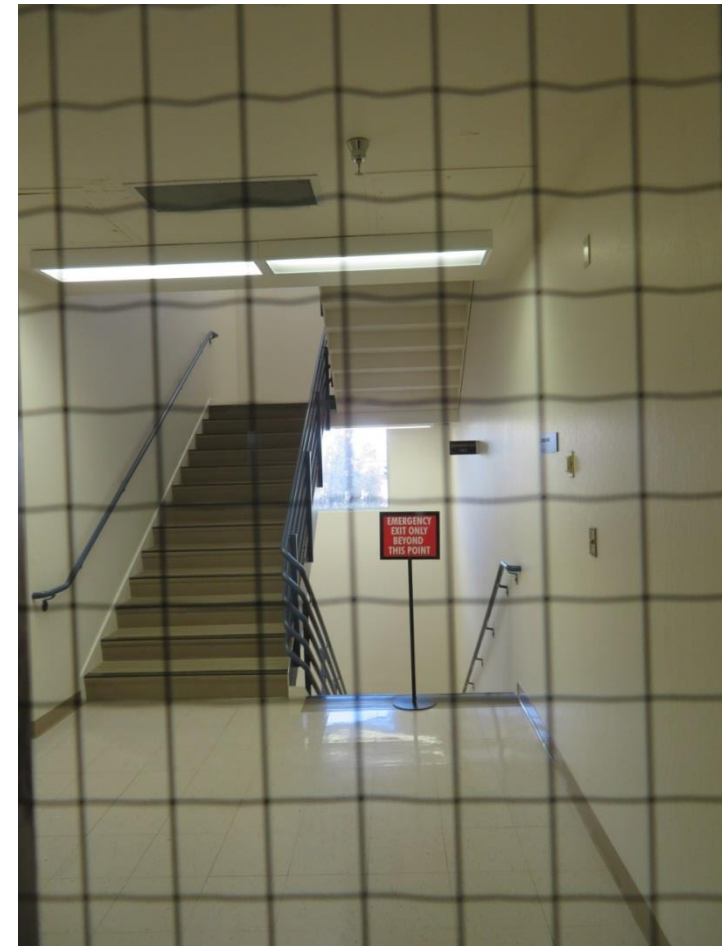






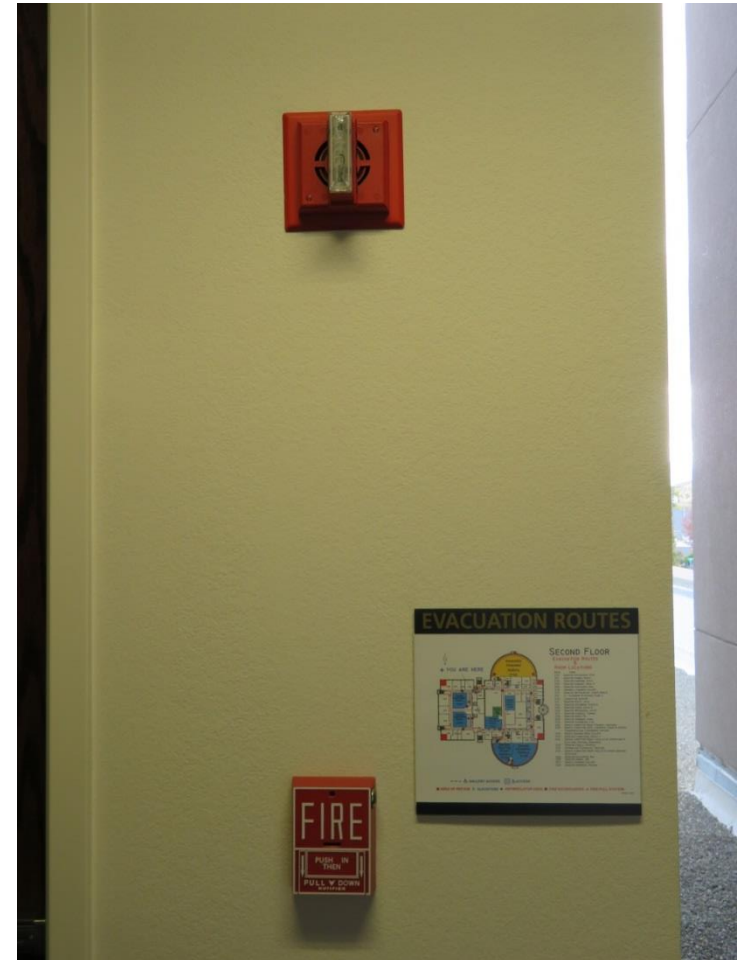
Signage throughout clearly marks where to exit  
in the event of an emergency.



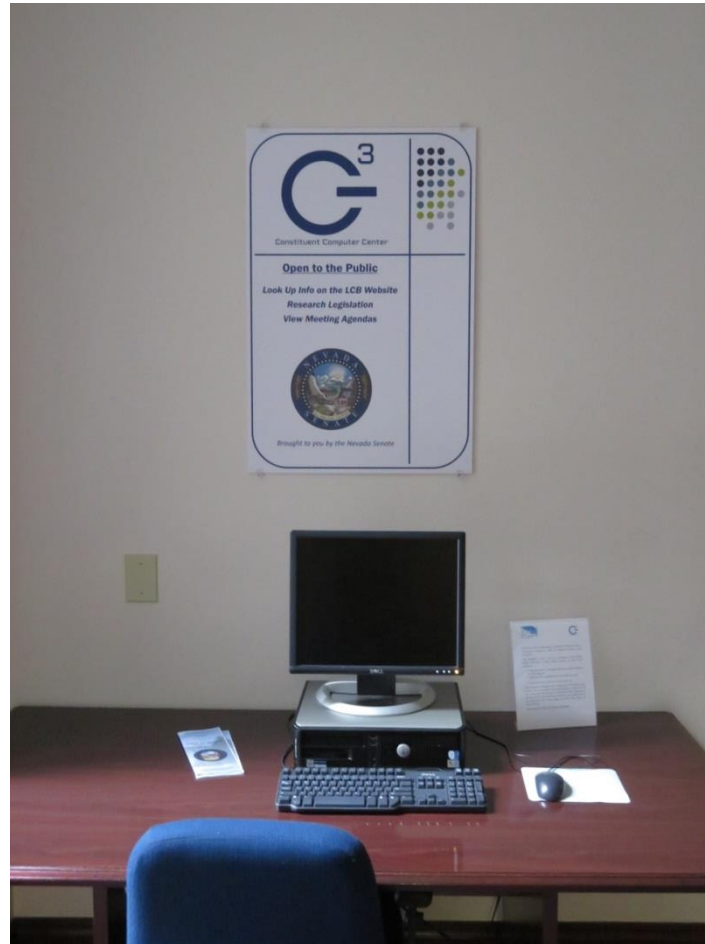


Wide stairwells provide adequate space for emergency egress.  
Some provide direct exit to outside the buildings.





Modern fire safety systems are integrated throughout.



Public access is emphasized in Nevada's "People's House."



“Assistive listening” systems make Chambers and hearing rooms accessible to the hearing impaired.

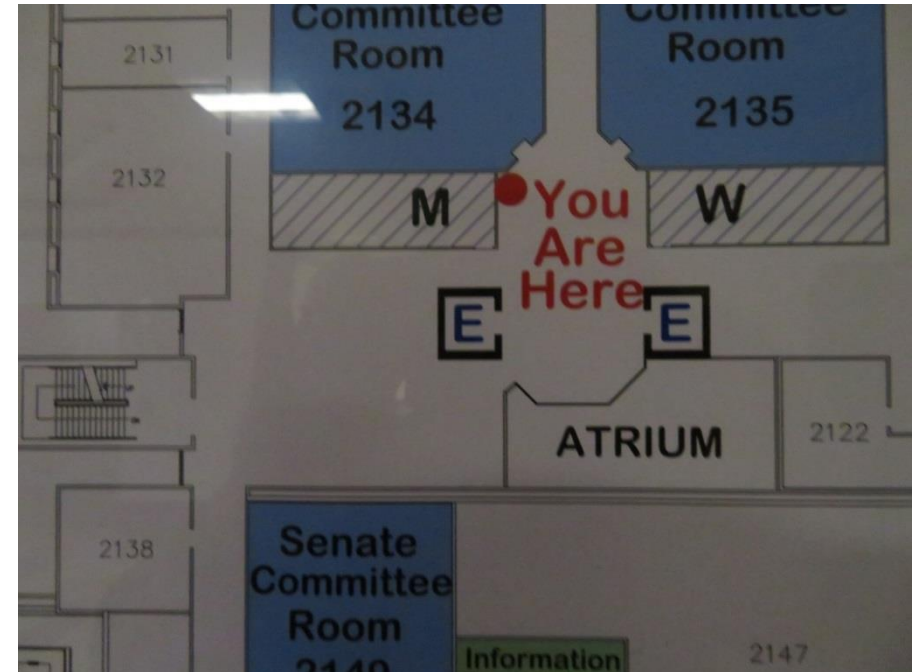




Upon entry, guests see the state seal which emphasizes unity and inclusiveness.



Security notices alert visitors about safety measures as they enter the Capitol.



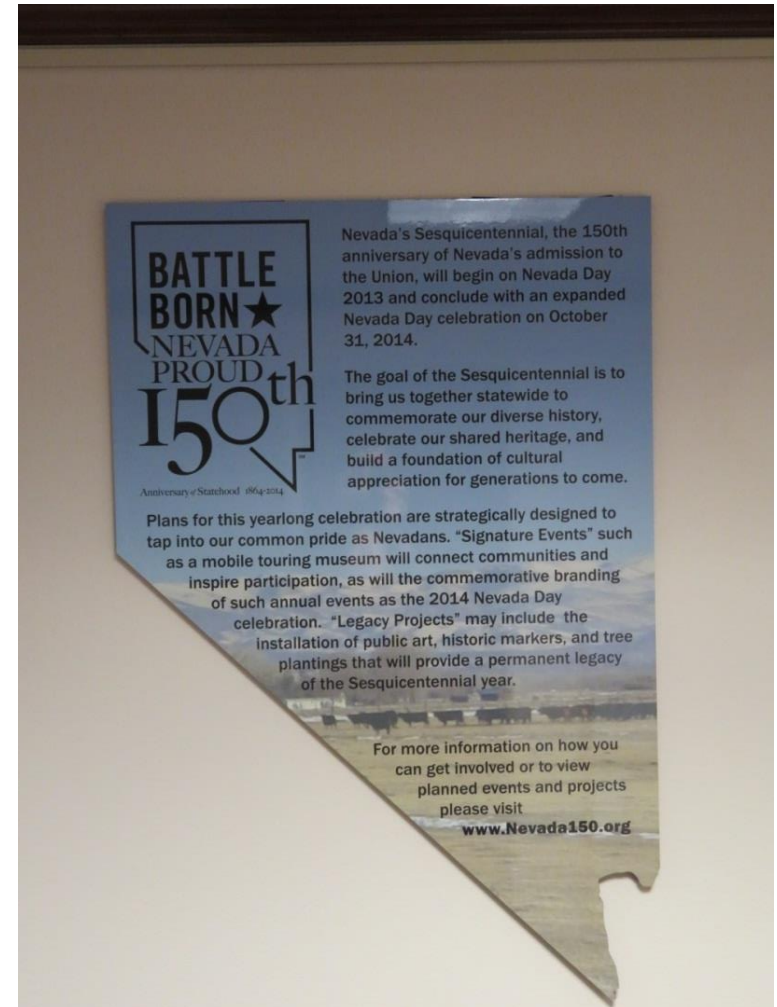
Directories with accompanying floor layout maps are abundant to guide foot traffic throughout the Capitol.







Large corridors near the main entry include educational displays which provide an accessible and comfortable environment for learning.







Nevada's Capitol was designed with hospitality in mind. The glass-enclosed gift shop is near high traffic elevators and the café for easy access by all visitors.



Capitol Café is bustling with conversations on session days.



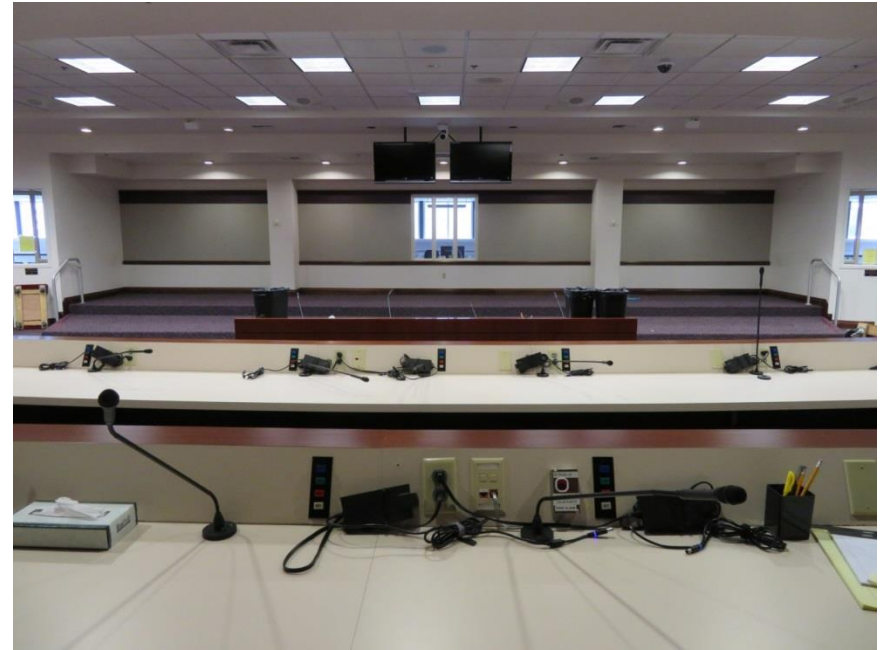




Clear signage advises witnesses and guests about rules and procedures in hearing rooms.



Removable seating makes hearing rooms flexible and accessible to all.

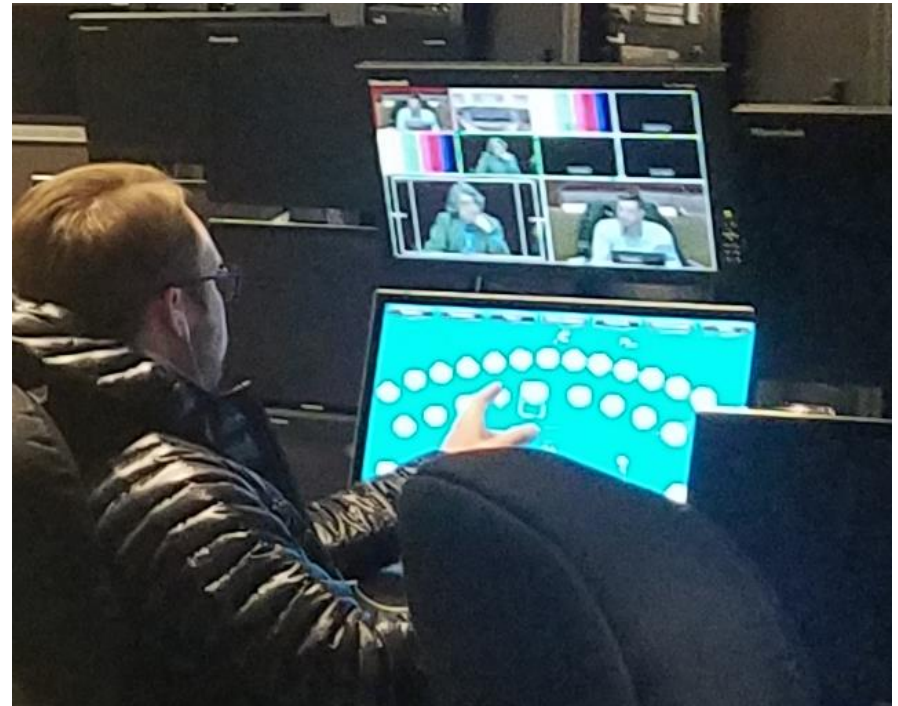
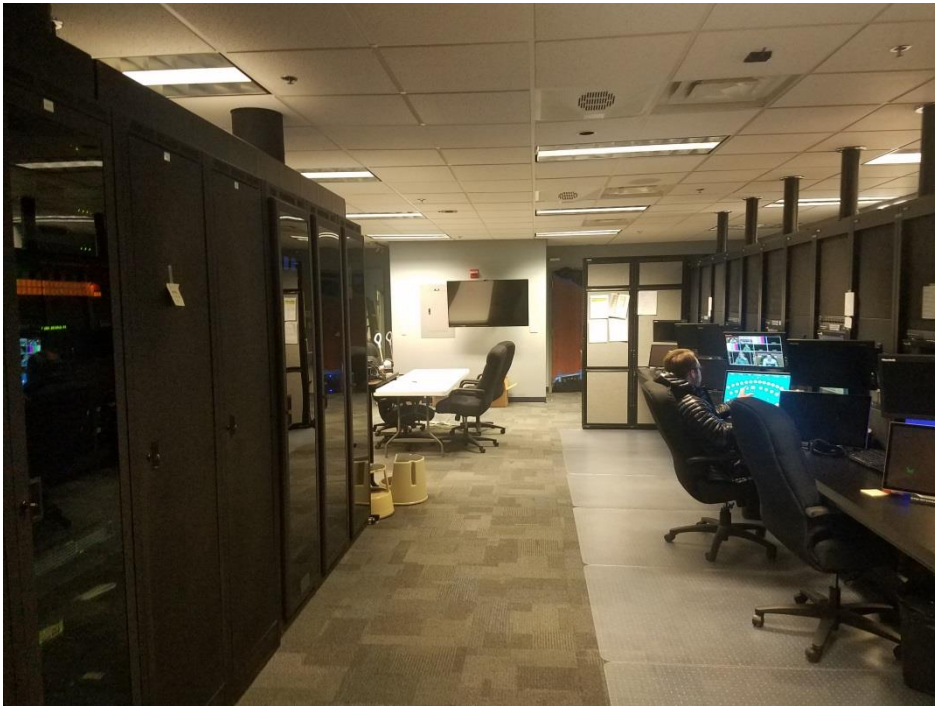


Hearing rooms are equipped with projectors and screens to facilitate the sharing of ideas.





Modern technology is integrated in hearing rooms to allow for remote testimony. A state commission on child support convened simultaneously with a portion of the membership in a Las Vegas state building and the balance in the Capitol. The screen on the left shows those who are speaking and the screen on the right shows those participating at the second venue.



In an adjacent control room, staff use touch screen technology to control the cameras at both venues.



Clutter free corridors without grade changes make it easy to get from one side of the Capitol to the other.





Abundant seating areas by hallways provide space for resting visitors and impromptu meetings without blocking corridors.







CAPITOL  
ANNEX  
PROJECT





Wide elevators can accommodate motorized chairs and emergency equipment.



Break rooms are equipped with a sink and kitchen appliances.









Cameras allow security to observe the perimeter of the Capitol.





For improved security, parking is available in a garage that has a separate footprint from the Capitol.

CAPITOL  
ANNEX  
PROJECT









The loading dock is attached to the Capitol.