

Visiting Boise, Idaho's Capitol of Light

“We shape our buildings and afterwards they shape us.”
- Winston Churchill

Assemblyman Ken Cooley
August 4, 2016

Profile of original Capitol designed by John E. Tourtellotte is preserved.



Assemblyman Ken Cooley
Boise, Idaho "Capitol of Light"

Visitors are welcomed to the “People’s House” with inviting signage as they enter the building.



Assemblyman Ken Cooley
Boise, Idaho "Capitol of Light"

Plaques describe the experience available to visitors.



Assemblyman Ken Cooley
Boise, Idaho "Capitol of Light"

Jan Frew, Administrator, Division of Public Works and Robert Geddes, Director of the Idaho Department of Administration.



Assemblyman Ken Cooley
Boise, Idaho "Capitol of Light"

“Shine a light on government”

- **The Capitol is designed with elements that allow visitors to view government including expanded visitor facilities, enhanced public access to hearing rooms, and spaces created for informal deliberation.**
- **The concept of illuminating government is symbolized throughout the building with the utilization of natural light resources.**

The Capitol of Light

- **Historic Capitol preservation undertook restoring the original building to its original glory.**
- **Three domes, extensive use of marble and the influx of natural light are signature pieces of the finished look.**
- **Special attention was paid to signage and utilization of space to support routing visitors throughout the Capitol in a flow harmonized with working areas.**

Scagliola (scal-lee-ola), the thin faux marble coating on the columns, was just one of the lost arts needed to resurrect the original glory of the rotunda.



Assemblyman Ken Cooley
Boise, Idaho "Capitol of Light"

View from the top level down into the rotunda.



Assemblyman Ken Cooley
Boise, Idaho "Capitol of Light"

Main dome meticulously restored illuminates the Capitol with natural light and an upgraded electrical system.



Assemblyman Ken Cooley
Boise, Idaho "Capitol of Light"

Smaller dome reveals natural light in the House Chamber.



Assemblyman Ken Cooley
Boise, Idaho "Capitol of Light"

House Chambers entrance includes a seating area to encourage collaboration.



Assemblyman Ken Cooley
Boise, Idaho "Capitol of Light"

Glass doors allow visitors to view their government at work at the Senate Chambers entry.



Assemblyman Ken Cooley
Boise, Idaho "Capitol of Light"

Historical committee room.



Assemblyman Ken Cooley
Boise, Idaho "Capitol of Light"

Garden Level

- **The “Garden Level” was a basement used primarily for storage that was transformed into a welcoming reception area for visitors of the People’s House.**
- **The Garden Level is comprised of two new underground wings, the visitor’s center and gift shop which are located beneath the Rotunda.**

Handsome signage directs the circulation of visitors to areas built for them.



Assemblyman Ken Cooley
Boise, Idaho "Capitol of Light"

Original State Capitol profile with skylights that illuminate the garden level wings underground.



Assemblyman Ken Cooley
Boise, Idaho "Capitol of Light"

Skylights are integrated into the garden to preserve the original footprint of the Capitol.



Assemblyman Ken Cooley
Boise, Idaho "Capitol of Light"

Design elements including the use of marble and natural light create harmony between the old and new buildings.



Assemblyman Ken Cooley
Boise, Idaho "Capitol of Light"

Skylights flood the new underground garden level wings with natural light.

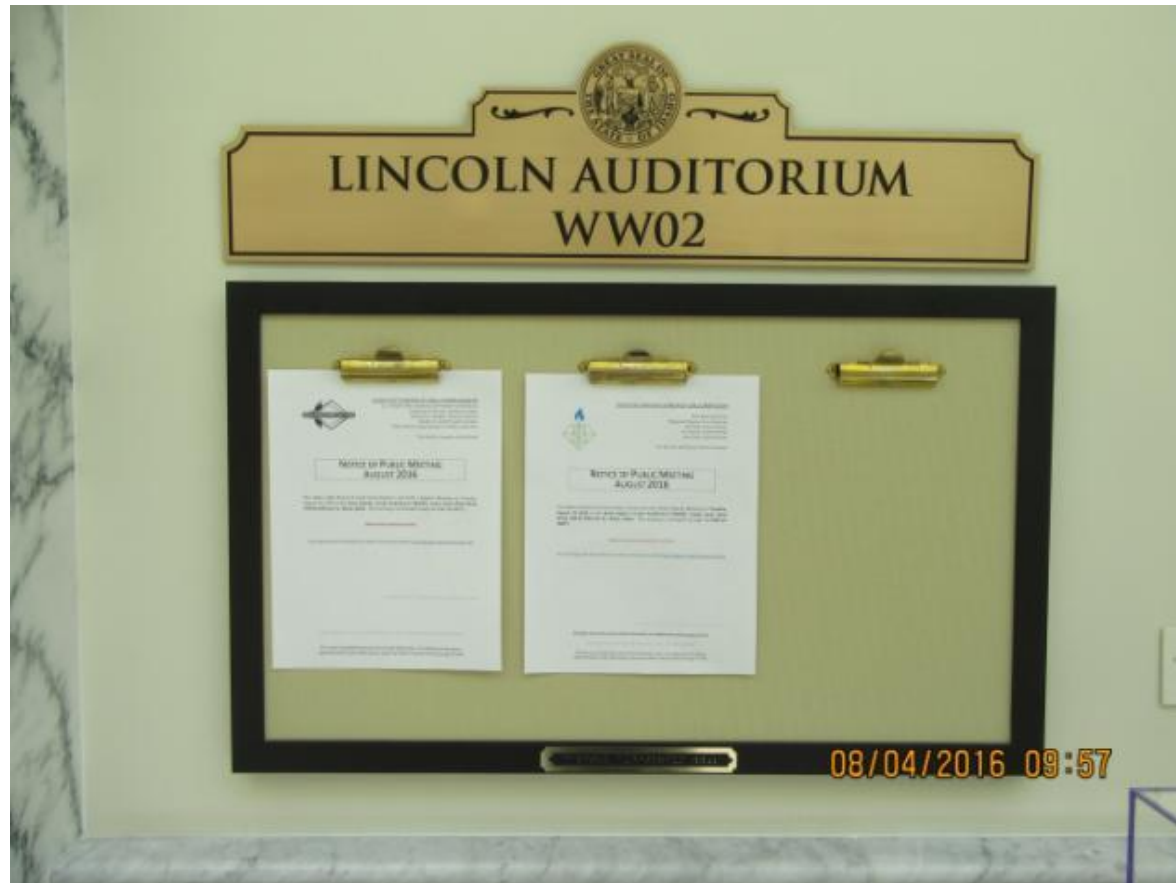


Assemblyman Ken Cooley Boise, Idaho
"Capitol of Light"

The Abraham Lincoln Auditorium

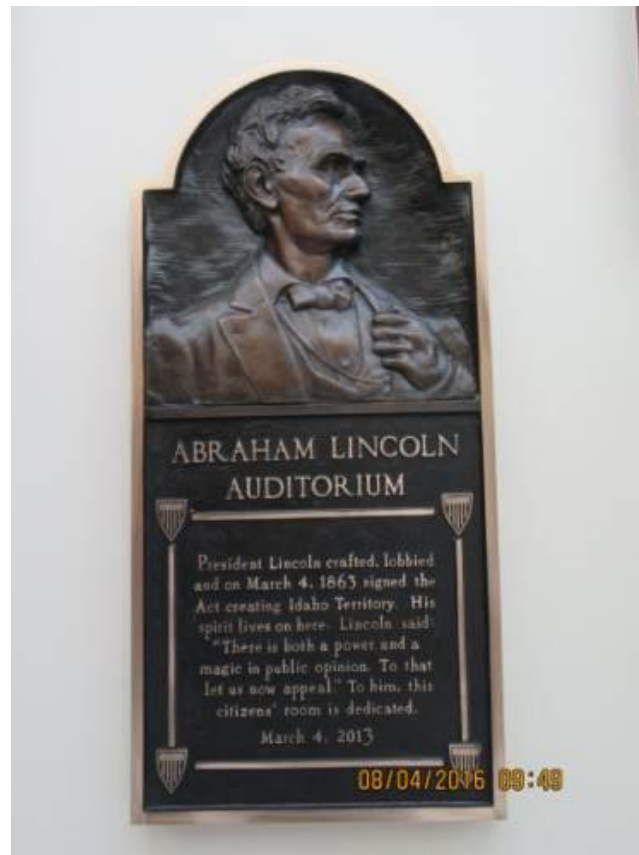
- **A multi-use auditorium designed with accessibility in mind.**
- **Equipped with multi-faceted technology that links to overflow hearing rooms.**

Decorative bulletin boards outside of the auditorium announce events occurring inside.



Assemblyman Ken Cooley
Boise, Idaho "Capitol of Light"

Beautifully constructed plaque in the Abraham Lincoln Auditorium.



Assemblyman Ken Cooley
Boise, Idaho "Capitol of Light"

The Abraham Lincoln Auditorium captures the glory of the original Capitol.



Assemblyman Ken Cooley
Boise, Idaho "Capitol of Light"

Modern touches were added including a backlit seal behind stage/dais.



Assemblyman Ken Cooley
Boise, Idaho "Capitol of Light"

Legislators have multiple outlets to accommodate a variety of technologies.



Assemblyman Ken Cooley
Boise, Idaho "Capitol of Light"

300 numbered seats for special ticketed event functionality.



Assemblyman Ken Cooley
Boise, Idaho "Capitol of Light"

**Mobile dais above allows for a multi-use stage area.
Witnesses and guests have access to
multiple outlet stations below.**



Assemblyman Ken Cooley
Boise, Idaho "Capitol of Light"

Multi-faceted tech capabilities connect to overflow hearing rooms to facilitate public engagement.



Assemblyman Ken Cooley
Boise, Idaho "Capitol of Light"

Beautiful high wall paneling.



Assemblyman Ken Cooley
Boise, Idaho "Capitol of Light"

Decorative railings alongside ADA access ramps. Wood paneling along the length of the walls.



Assemblyman Ken Cooley
Boise, Idaho "Capitol of Light"

User-friendly audio system.



Assemblyman Ken Cooley
Boise, Idaho "Capitol of Light"

Tech hub accessible to the public with room for modifications and upgrades.



Assemblyman Ken Cooley Boise, Idaho
"Capitol of Light"

New Senate hearing rooms emphasize accessibility to all.

Decorative hearing room bulletin board keeps the public up to date on events occurring inside.



Assemblyman Ken Cooley
Boise, Idaho "Capitol of Light"

Hearing room with mobile seating for greater access and flexibility in the space.



Assemblyman Ken Cooley
Boise, Idaho "Capitol of Light"

**Clear and consistently designed signage.
Hearing impaired access equipment available.**



Assemblyman Ken Cooley
Boise, Idaho "Capitol of Light"

New House Hearing Rooms

Decorative hearing room bulletin board.



Assemblyman Ken Cooley
Boise, Idaho "Capitol of Light"

Backlit seal and wood paneling.



Assemblyman Ken Cooley
Boise, Idaho "Capitol of Light"

Glass doors allow natural light to spill into committee hearing rooms.



Assemblyman Ken Cooley
Boise, Idaho "Capitol of Light"

Hearing rooms are equipped with projector screens.



Assemblyman Ken Cooley
Boise, Idaho "Capitol of Light"

Handsome doors create harmony between hearing rooms in the old and new buildings.



Assemblyman Ken Cooley
Boise, Idaho "Capitol of Light"

Senate and House Office Suites

Consistent decorative signage.



Assemblyman Ken Cooley
Boise, Idaho "Capitol of Light"

Private entrance to Senate suites provide workday traffic with a path independent of visitor traffic.



Assemblyman Ken Cooley
Boise, Idaho "Capitol of Light"

Chairperson suites have glass doors to allow natural light in.



Assemblyman Ken Cooley
Boise, Idaho "Capitol of Light"

Chairperson suite.



Assemblyman Ken Cooley
Boise, Idaho "Capitol of Light"

Small skylights illuminate the corridor of office suites.



Assemblyman Ken Cooley
Boise, Idaho "Capitol of Light"

Corridor of office suites.



Assemblyman Ken Cooley
Boise, Idaho "Capitol of Light"

House office suite. Stylistic lettering on the doors.



Assemblyman Ken Cooley
Boise, Idaho "Capitol of Light"

Elegant yet minimalist decor for most office spaces.



Assemblyman Ken Cooley
Boise, Idaho "Capitol of Light"

Receptionist desk with seating to accommodate visitors.



Assemblyman Ken Cooley
Boise, Idaho "Capitol of Light"

Ongoing upgrade projects.



Assemblyman Ken Cooley
Boise, Idaho "Capitol of Light"

More upgrades.



Assemblyman Ken Cooley
Boise, Idaho "Capitol of Light"

Maintaining the original footprint of the Capitol with exterior architectural details.

Triangular rooftop skylights over the new wings are nestled among the foliage in the garden.



Assemblyman Ken Cooley
Boise, Idaho "Capitol of Light"

Smaller skylight over the office suites corridor.



Assemblyman Ken Cooley
Boise, Idaho "Capitol of Light"

Garden pathways, seating areas, inviting and warm infrastructure guide visitors into the Capitol.



Assemblyman Ken Cooley
Boise, Idaho "Capitol of Light"

View looking up at the skylight from below.



Assemblyman Ken Cooley
Boise, Idaho "Capitol of Light"

Exiting the Capitol.



Assemblyman Ken Cooley
Boise, Idaho "Capitol of Light"

Wide, direct entrance to one of the wings provides easy access to the public and a route for natural light to enter the underground spaces.



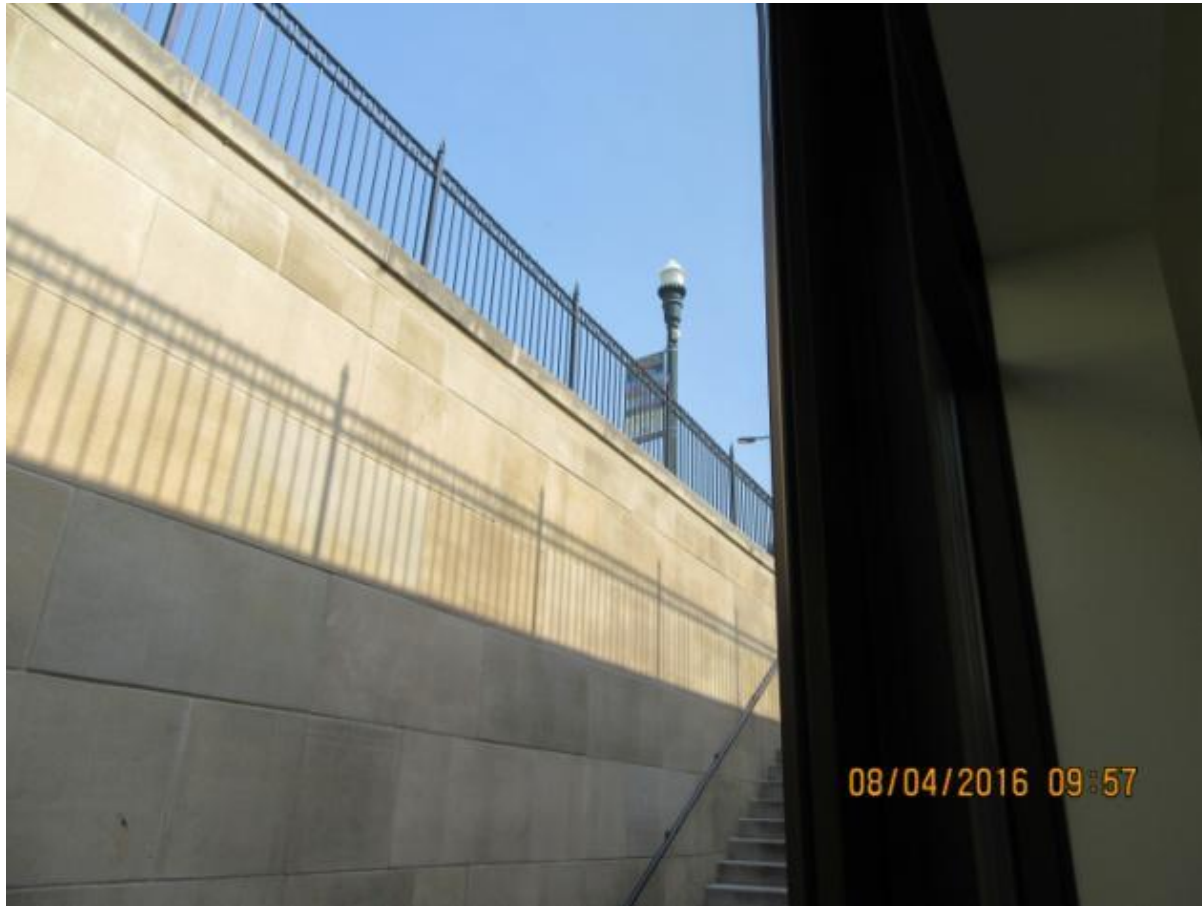
Assemblyman Ken Cooley
Boise, Idaho "Capitol of Light"

Glass entries to underground wings help illuminate the garden level floor.



Assemblyman Ken Cooley
Boise, Idaho "Capitol of Light"

Entrance to the garden level wing.



Assemblyman Ken Cooley
Boise, Idaho "Capitol of Light"

A new large elevator was installed to facilitate the movement of emergency equipment.

Key card access technology in the elevators.



Assemblyman Ken Cooley
Boise, Idaho "Capitol of Light"

Visitor experience and circulation: A top priority of the restoration.

Visitors enjoy the grounds, lunching at the picnic tables.



Assemblyman Ken Cooley
Boise, Idaho "Capitol of Light"

Well-designed signage welcome visitors away from working areas. Entry gallery educates visitors on State and Capitol restoration history.



Assemblyman Ken Cooley
Boise, Idaho "Capitol of Light"

A vista that invites exploration greets visitors entering the restored basement Visitor Center from the Entry Gallery.



Assemblyman Ken Cooley
Boise, Idaho "Capitol of Light"

Large storyboards are beautifully designed and installed throughout the lower rotunda.



Assemblyman Ken Cooley
Boise, Idaho "Capitol of Light"

All of the storyboards are numbered to keep the flow of visitors moving throughout the center. Each board is easy to read - large fonts, interesting and well lit.



Assemblyman Ken Cooley
Boise, Idaho "Capitol of Light"

Entrance sign to the House Gallery.



Assemblyman Ken Cooley
Boise, Idaho "Capitol of Light"

ADA accessibility elements are clearly marked throughout the grounds.



Assemblyman Ken Cooley
Boise, Idaho "Capitol of Light"

More access signs.



Assemblyman Ken Cooley
Boise, Idaho "Capitol of Light"

View of new ramp that replaced a staircase to improve access for all.



Assemblyman Ken Cooley
Boise, Idaho "Capitol of Light"

Accessible entries.



Assemblyman Ken Cooley
Boise, Idaho "Capitol of Light"

Emphasis on Collaborative Spaces

Public lounge and overflow spaces have wonderful seating and are connected digitally to nearby hearing rooms.



Assemblyman Ken Cooley
Boise, Idaho "Capitol of Light"

Inviting public lounge.



Assemblyman Ken Cooley
Boise, Idaho "Capitol of Light"

Seating areas promoting collaborative idea sharing.



Assemblyman Ken Cooley
Boise, Idaho "Capitol of Light"

Handsome public lounge seating outside galleries accessible to the public.



Assemblyman Ken Cooley
Boise, Idaho "Capitol of Light"

Legislative Dining

Legislative Dining is open to legislators, staff, and the public.



Assemblyman Ken Cooley
Boise, Idaho "Capitol of Light"

Legislative Dining



Assemblyman Ken Cooley
Boise, Idaho "Capitol of Light"

Cafeteria style food service.



Assemblyman Ken Cooley
Boise, Idaho "Capitol of Light"

Attention to detail throughout.



Assemblyman Ken Cooley
Boise, Idaho "Capitol of Light"

Wood paneling.



Assemblyman Ken Cooley
Boise, Idaho "Capitol of Light"